

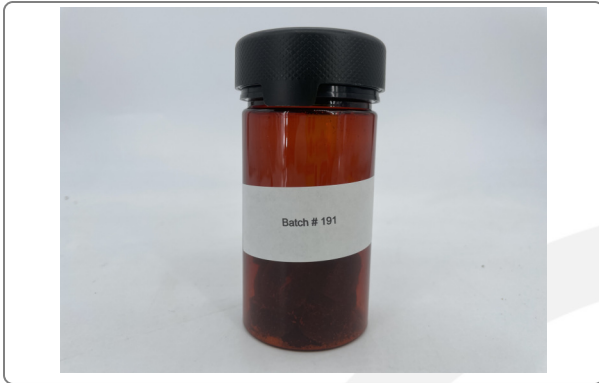
Cypress

METRC Batch:
METRC Sample:
Sample ID: 2501ENC0675_2203
Strain: Batch # 191
Matrix: Ingestible
Type: Soft Chew
Batch#: 1

Collected: 01/22/2025
Received: 01/22/2025
Completed: 02/03/2025
Sample Size: 10 units;

Distributor
Cypress Hemp

Lic. #



Summary

Test	Date Tested	Instr. Method	Result
Batch			Pass
Cannabinoids	01/23/2025	LC-DAD	Complete
Water Activity	01/30/2025	Water Activity Meter	0.5380 aw - Pass
Pesticides	01/30/2025	LC-MS	Pass
Mycotoxins	01/30/2025	LC-MS	Pass
Residual Solvents	01/30/2025	HS-GC-MS	Pass
Microbial Impurities	01/31/2025	qPCR	Pass
Heavy Metals	01/31/2025	ICP-MS	Pass
Foreign Matter	01/30/2025	Visual Inspection	Pass

Cannabinoids

Method: SOP CA_M-CANNABINOIDS

ND Total THC	27.23 mg/unit Total CBD	27.23 mg/unit Total Cannabinoids
------------------------	-----------------------------------	--

Analytes	LOD	LOQ	Result	Result	Result
	mg/g	mg/g	%	mg/g	mg/unit
THCa	0.013	0.040	ND	ND	ND
Δ9-THC	0.015	0.045	ND	ND	ND
Δ8-THC	0.014	0.042	ND	ND	ND
THCVa	0.013	0.041	ND	ND	ND
THCV	0.014	0.042	ND	ND	ND
CBDa	0.015	0.044	ND	ND	ND
CBD	0.015	0.045	0.756	7.56	27.23
CBN	0.015	0.044	ND	ND	ND
CBGa	0.015	0.045	ND	ND	ND
CBG	0.014	0.043	ND	ND	ND
CBCa	0.013	0.039	ND	ND	ND
CBC	0.015	0.044	ND	ND	ND
Total THC			ND	ND	ND
Total CBD			0.756	7.56	27.23
Total Cannabinoids			0.756	7.56	27.23
Sum of Cannabinoids			0.756	7.56	27.23

1 Unit = 3.6g;

Total THC = THCa * 0.877 + Δ9-THC + Δ8-THC; Total CBD = CBDa * 0.877 + CBD; Total Cannabinoids = (cannabinoid acid forms * 0.877) + cannabinoids; Sum of Cannabinoids = cannabinoid acid forms + cannabinoids; LOQ = Limit of Quantitation; LOD = Limit of Detection; NT = Not Tested; ND = Not Detected. The reported result is based on a sample weight with the applicable moisture content for that sample. Foreign Material Method: SOP CA_M-FOREIGN; Moisture and Water Activity Method: SOP CA_M-WATER



Kevin Nolan
Kevin Nolan
Laboratory Director | 02/03/2025



Cypress

METRC Batch:
METRC Sample:
Sample ID: 2501ENC0675_2203
Strain: Batch # 191
Matrix: Ingestible
Type: Soft Chew
Batch#: 1

Collected: 01/22/2025
Received: 01/22/2025
Completed: 02/03/2025
Sample Size: 10 units;

Distributor
Cypress Hemp

Lic. #

Pesticides

Method: SOP CA_M-PESTMYCOLCMS

Analyses	LOD	LOQ	Limit	Result	Status	Analyses	LOD	LOQ	Limit	Result	Status
	µg/g	µg/g	µg/g	µg/g			µg/g	µg/g	µg/g	µg/g	
Abamectin	0.019	0.056	0.3	ND	Pass	Fludioxonil	0.011	0.034	30	ND	Pass
Acephate	0.006	0.02	5	ND	Pass	Hexythiazox	0.008	0.025	2	ND	Pass
Acequinocyl	0.0089	0.0268	4	ND	Pass	Imazalil	0.021	0.064	0.021	ND	Pass
Acetamiprid	0.006	0.018	5	ND	Pass	Imidacloprid	0.009	0.026	3	ND	Pass
Aldicarb	0.031	0.095	0.031	ND	Pass	Kresoxim Methyl	0.015	0.044	1	ND	Pass
Azoxystrobin	0.006	0.017	40	ND	Pass	Malathion	0.008	0.023	5	ND	Pass
Bifenazate	0.01	0.03	5	ND	Pass	Metalaxyl	0.007	0.021	15	ND	Pass
Bifenthrin	0.049	0.15	0.5	ND	Pass	Methiocarb	0.015	0.044	0.015	ND	Pass
Boscalid	0.01	0.031	10	ND	Pass	Methomyl	0.017	0.051	0.1	ND	Pass
Captan	0.05	0.1516	5	ND	Pass	Parathion Methyl	0.0157	0.0477	0.0157	ND	Pass
Carbaryl	0.022	0.065	0.5	ND	Pass	Mevinphos	0.024	0.072	0.024	ND	Pass
Carbofuran	0.017	0.051	0.017	ND	Pass	Myclobutanil	0.011	0.033	9	ND	Pass
Chlorantraniliprole	0.011	0.034	40	ND	Pass	Naled	0.026	0.078	0.5	ND	Pass
Chlordane	0.0099	0.03	0.0099	ND	Pass	Oxamyl	0.014	0.044	0.2	ND	Pass
Chlorfenapyr	0.0316	0.0957	0.0316	ND	Pass	Paclobutrazol	0.033	0.099	0.033	ND	Pass
Chlorpyrifos	0.024	0.073	0.024	ND	Pass	PCNB	0.0133	0.0403	0.2	ND	Pass
Clofentezine	0.011	0.034	0.5	ND	Pass	Permethrin	0.013	0.039	20	ND	Pass
Coumaphos	0.028	0.084	0.028	ND	Pass	Phosmet	0.006	0.018	0.2	ND	Pass
Cyfluthrin	0.0243	0.0736	1	ND	Pass	Piperonyl Butoxide	0.008	0.025	8	ND	Pass
Cypermethrin	0.0409	0.124	1	ND	Pass	Prallethrin	0.01	0.03	0.4	ND	Pass
Daminozide	0.023	0.069	0.023	ND	Pass	Propiconazole	0.009	0.028	20	ND	Pass
Diazinon	0.008	0.024	0.2	ND	Pass	Propoxur	0.02	0.061	0.02	ND	Pass
Dichlorvos	0.017	0.051	0.017	ND	Pass	Pyrethrins	0.02	0.059	1	ND	Pass
Dimethoate	0.02	0.059	0.02	ND	Pass	Pyridaben	0.01	0.03	3	ND	Pass
Dimethomorph	0.01	0.03	20	ND	Pass	Spinetoram	0.012	0.037	3	ND	Pass
Ethoprophos	0.016	0.048	0.016	ND	Pass	Spinosad	0.01	0.032	3	ND	Pass
Etofenprox	0.027	0.082	0.027	ND	Pass	Spiromesifen	0.011	0.033	12	ND	Pass
Etoxazole	0.006	0.017	1.5	ND	Pass	Spirotetramat	0.018	0.054	13	ND	Pass
Fenhexamid	0.013	0.04	10	ND	Pass	Spiroxamine	0.01	0.03	0.01	ND	Pass
Fenoxycarb	0.012	0.037	0.012	ND	Pass	Tebuconazole	0.014	0.042	2	ND	Pass
Fenpyroximate	0.003	0.01	2	ND	Pass	Thiacloprid	0.01	0.031	0.01	ND	Pass
Fipronil	0.021	0.063	0.021	ND	Pass	Thiamethoxam	0.013	0.039	4.5	ND	Pass
Fonicamid	0.017	0.051	2	ND	Pass	Trifloxystrobin	0.004	0.011	30	ND	Pass

Date Tested: 01/30/2025

LOQ = Limit of Quantitation; LOD = Limit of Detection; NT = Not Tested; ND = Not Detected.



Kevin Nolan
Kevin Nolan
Laboratory Director | 02/03/2025



Cypress

METRC Batch:
METRC Sample:
Sample ID: 2501ENC0675_2203
Strain: Batch # 191
Matrix: Ingestible
Type: Soft Chew
Batch#: 1

Collected: 01/22/2025
Received: 01/22/2025
Completed: 02/03/2025
Sample Size: 10 units;

Distributor
Cypress Hemp
Lic. #

Mycotoxins

Method: SOP CA_M-PESTMYCOLCMS

Analytes	LOD	LOQ	Limit	Result	Status
	µg/kg	µg/kg	µg/kg	µg/kg	
Aflatoxin B1	2.80	8.40		ND	Tested
Aflatoxin B2	1.90	5.60		ND	Tested
Aflatoxin G1	1.40	4.20		ND	Tested
Aflatoxin G2	2.00	6.20		ND	Tested
Ochratoxin A	2.70	8.10	20.00	ND	Pass
Total Aflatoxins			20.00	ND	Pass

Date Tested: 01/30/2025

LOQ = Limit of Quantitation; LOD = Limit of Detection; NT = Not Tested; ND = Not Detected.

Residual Solvents

Method: SOP CA_M-RES_SOLVENTS

Analytes	LOD	LOQ	Limit	Result	Status
	µg/g	µg/g	µg/g	µg/g	
Acetone	3.37	10.20	5000	ND	Pass
Acetonitrile	1.80	5.45	410	ND	Pass
Benzene	0.11	0.33	1	ND	Pass
Butane	2.31	7.01	5000	ND	Pass
Chloroform	0.21	0.65	1	ND	Pass
Ethanol	2.82	8.54	5000	18.85	Pass
Ethyl acetate	2.10	6.36	5000	ND	Pass
Ethyl ether	1.93	5.86	5000	ND	Pass
Ethylene Oxide	0.31	0.94	1	ND	Pass
Heptane	2.18	6.61	5000	ND	Pass
Hexane	2.22	6.74	290	ND	Pass
Isopropyl alcohol	2.19	6.64	5000	ND	Pass
Methanol	2.28	6.90	3000	<LOQ	Pass
Methylene chloride	0.10	0.31	1	ND	Pass
1,2-Dichloroethane	0.10	0.30	1	ND	Pass
Pentane	2.39	7.25	5000	ND	Pass
Propane	2.33	7.05	5000	ND	Pass
Toluene	0.59	1.79	890	ND	Pass
Total xylenes (ortho-, meta-, para-)	13.51	40.94	2170	ND	Pass
Trichloroethylene	0.18	0.54	1	ND	Pass

Date Tested: 01/30/2025

LOQ = Limit of Quantitation; LOD = Limit of Detection; NT = Not Tested; ND = Not Detected.



Kevin Nolan

Kevin Nolan
Laboratory Director | 02/03/2025



Cypress

METRC Batch:
METRC Sample:
Sample ID: 2501ENC0675_2203
Strain: Batch # 191
Matrix: Ingestible
Type: Soft Chew
Batch#: 1

Collected: 01/22/2025
Received: 01/22/2025
Completed: 02/03/2025
Sample Size: 10 units;

Distributor
Cypress Hemp

Lic. #

Microbial Impurities

Method: SOP CA_M-MICROBIALS

Analytes	Result	Status
Shiga toxin-producing Escherichia coli	Not Detected in 1g	Pass
Salmonella spp	Not Detected in 1g	Pass

Date Tested: 01/31/2025

Heavy Metals

Method: SOP CA_M-HEAVYMETALS

Analytes	LOD	LOQ	Limit	Result	Status
	µg/g	µg/g	µg/g	µg/g	
Arsenic	0.033	0.099	1.500	ND	Pass
Cadmium	0.028	0.085	0.500	ND	Pass
Lead	0.049	0.147	0.500	ND	Pass
Mercury	0.015	0.045	3.000	ND	Pass

Date Tested: 01/31/2025

LOQ = Limit of Quantitation; LOD = Limit of Detection; NT = Not Tested; ND = Not Detected.



Kevin Nolan

Kevin Nolan
Laboratory Director | 02/03/2025

